



cm	In	1.0 mmØ	1.5 mmØ	2.0 mmØ	2.0 mmØ	Watson-Cheyne	Fish
11.5	4 1/2"	58-004-11	58-006-11	58-008-11			
13	5"	58-004-13	58-006-13	58-008-13		58-016-13	
14.5	5 3/4"	58-004-14	58-006-14	58-008-14	58-010-14		58-020-14
16	6 1/4"	58-004-16	58-006-16	58-008-16	58-010-16		
18	7"	58-004-18	58-006-18	58-008-18		58-016-18	58-020-18
20	8"	58-004-20	58-006-20	58-008-20			
25	10"	58-004-25	58-006-25	58-008-25			



cm	In				Nelaton	Stacke 1.0 mm Ø	Brodie
10.5	4 1/4"					58-036-10	
11.5	4 1/2"	58-024-11					
13	5"	58-024-13		58-028-13	58-032-13		
14.5	5 3/4"	58-024-14	58-025-14	58-028-14	58-032-14		
16	6 1/4"	58-024-16		58-028-16	58-032-16	58-033-16	58-040-16
18	7"	58-024-18		58-028-18			
20	8"	58-024-20			58-032-20		

Of tin



58-044-25 25 cm/10"
58-044-30 30 cm/12"
58-044-40 40 cm/15"^{3/4}

Plaster spatulas



58-048-13 13 cm/5"
58-048-14 14 cm/5"^{1/2}



Pelteson
58-052-23
23 cm/9"



Fein
58-054-28
28 cm/11"



Buie
58-058-16
16 cm/6¹/₄"

Fistula probes



Lockhart-Mummary
16.5 cm/6¹/₂"



Fig. 1
58-062-01



Fig. 2
58-062-02



Fig. 3
58-062-03



Fig. 4
58-062-04



Pratt
21 cm/8¹/₄"



58-070-01



58-070-02



58-070-03



Universal

cm	in	1.2 mm Ø	1.5 mm Ø	1.7 mm Ø
12.5	5"	58-074-12		
16	6¼"	58-074-16		
18	7"	58-074-18	58-075-18	58-076-18



Uckermann
58-078-16
16 cm/6¼"



Jobson-Horne
58-080-13 13 cm/5"
58-080-18 18 cm/7"



Round Triangular

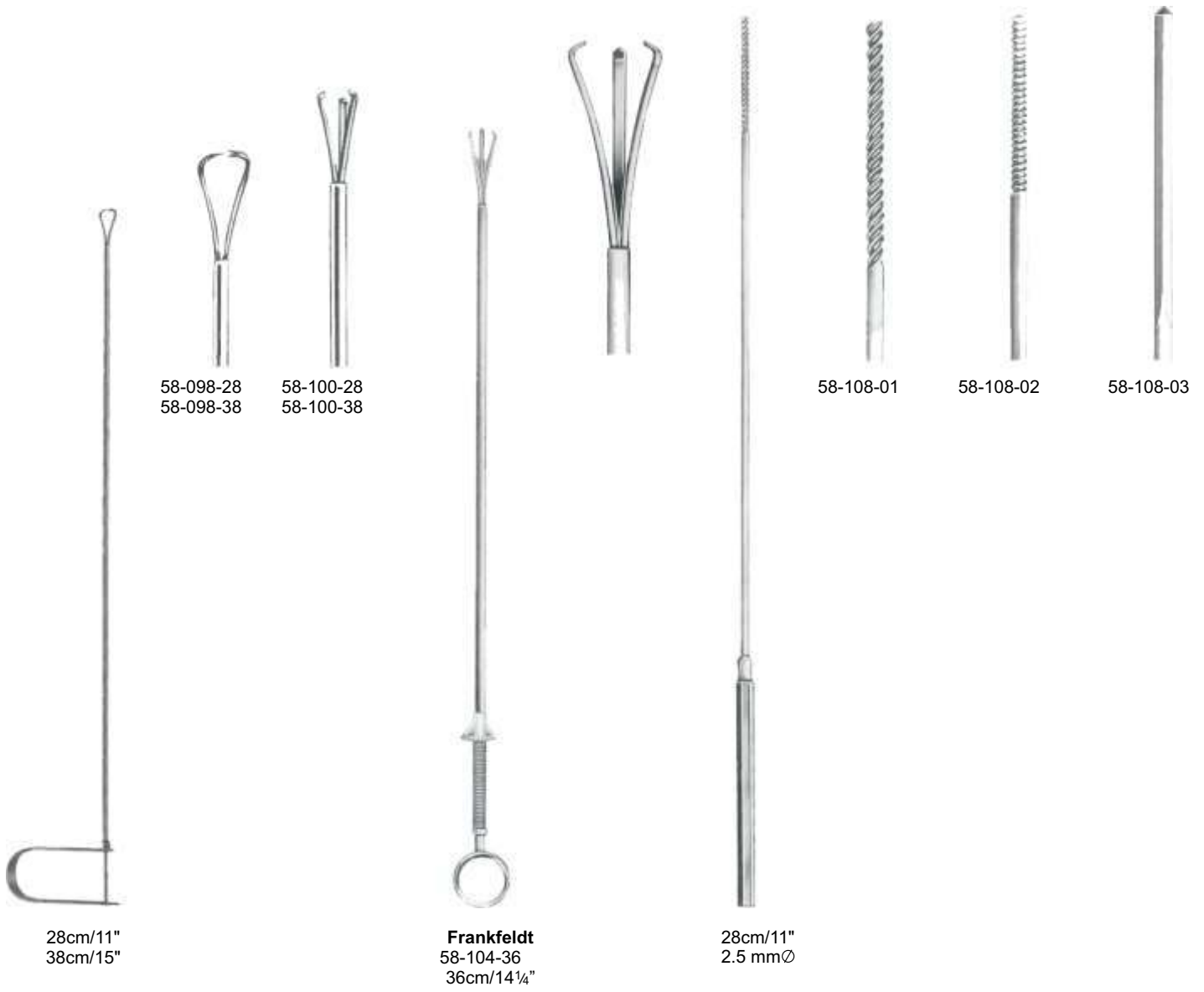
**Farrell
(Farrell-Lathbury)**

cm	in	●	▲
12	4¾"		
14	5½"	0.9 mm Ø	58-084-14 58-086-14
16	6¼"	1.1 mm Ø	58-084-16 58-086-16
18	7"		



Round Triangular

●	●	▲
1.2 mm Ø	1.5 mm Ø	1.5 mm Ø
58-090-12	58-092-12	58-094-12
58-090-14	58-092-14	58-094-14
58-090-16	58-092-16	58-094-16
58-090-18	58-092-18	58-094-18





Nabatoff
58-112-00
135x100x25 mm

Sterilizable



58-112-01

58-112-02

58-112-20



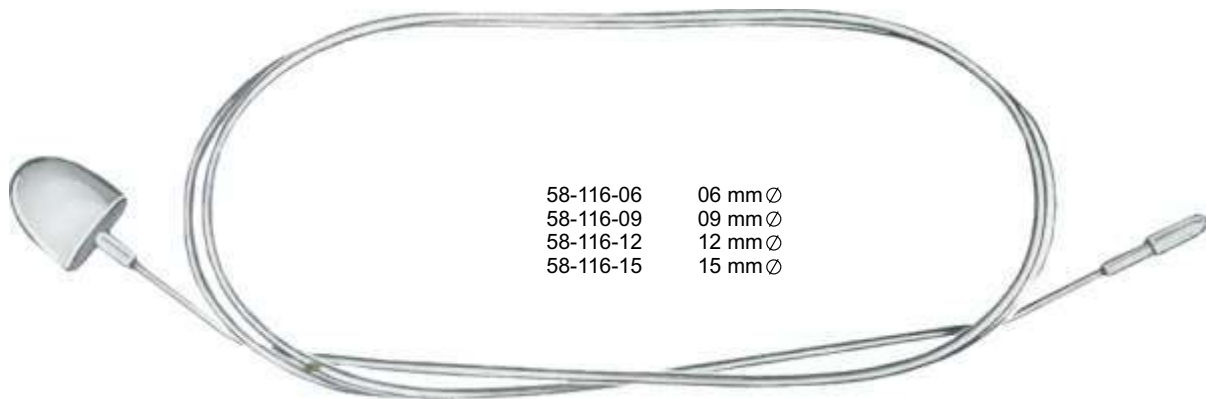
58-112-03
3 mm Ø

58-112-06
6 mm Ø

58-112-09
9 mm Ø

58-112-12
12 mm Ø

58-112-15
15 mm Ø



58-116-06	06 mm Ø
58-116-09	09 mm Ø
58-116-12	12 mm Ø
58-116-15	15 mm Ø

Myers

Strippers



55cm/21½"

	mm Ø
58-120-02	2.0
58-120-03	3.0
58-120-04	4.0
58-120-06	6.0
58-120-07	7.0
58-120-08	8.5
58-120-10	10.0
58-120-12	12.0
58-120-14	14.0



Handle for
58-120-00

Probes for Varicose Veins



Babcock

Malleable

cm	in	
40	13½"	58-124-40
50	20"	58-124-50
65	26"	58-124-65
80	32"	58-124-80

Vessel Irrigating Cannulas



Schimd



58-128-03
3 mm Ø



58-128-04
4 mm Ø



58-128-05
5mmØ



58-128-06
6mmØ

Spatulas



3 mm
Blunt

58-132-18 18.0 cm/7"
58-132-21 21.5 cm/8 ½"



Schmid



58-136-14
14 cm/5½"
5 mm



58-136-24
24 cm/9¼"
7 mm